

Pensions Board Defined Benefit Survey 2010 Results

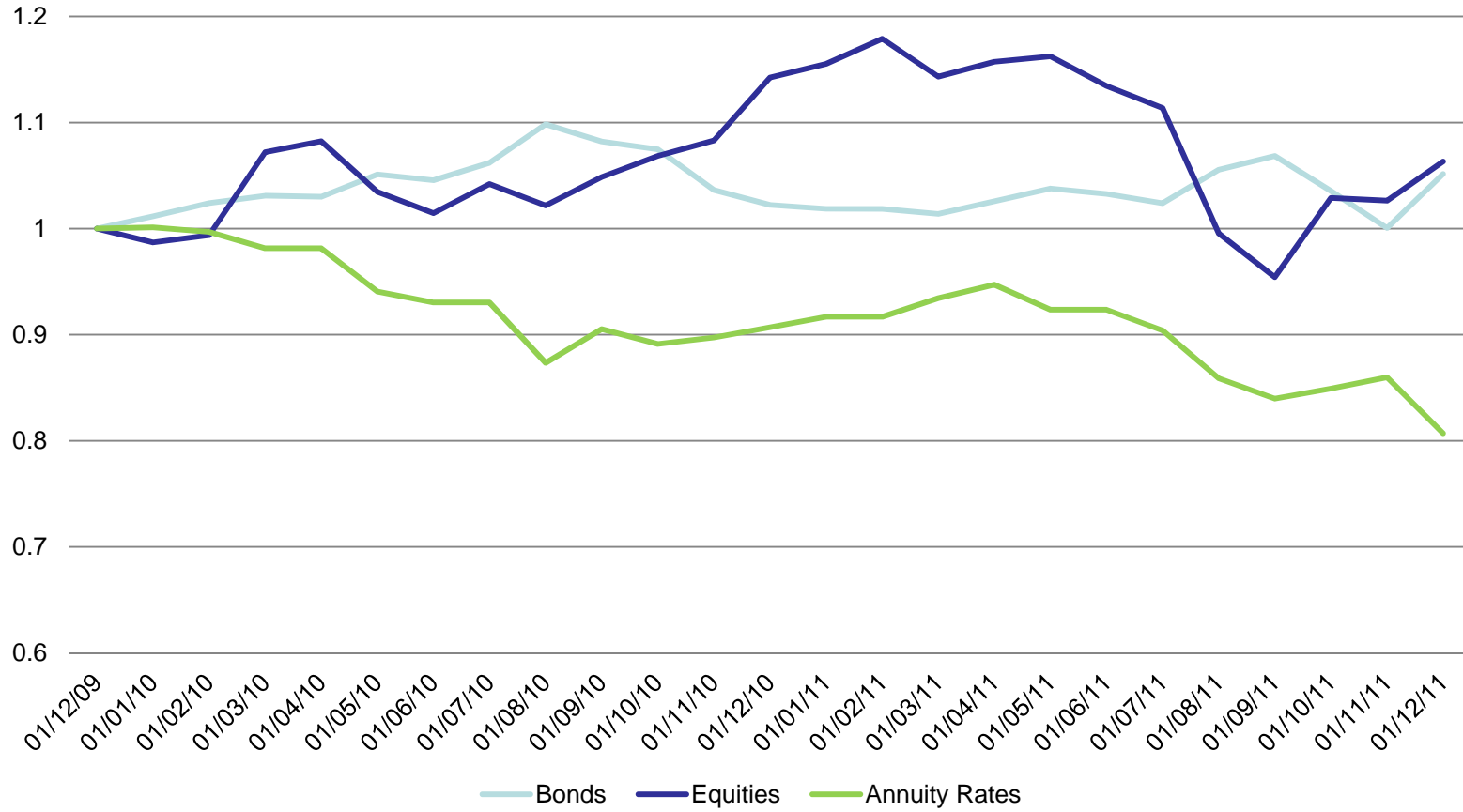
30 April 2012

www.pensionsboard.ie



**An Bord Pinsean
The Pensions Board**

Environment

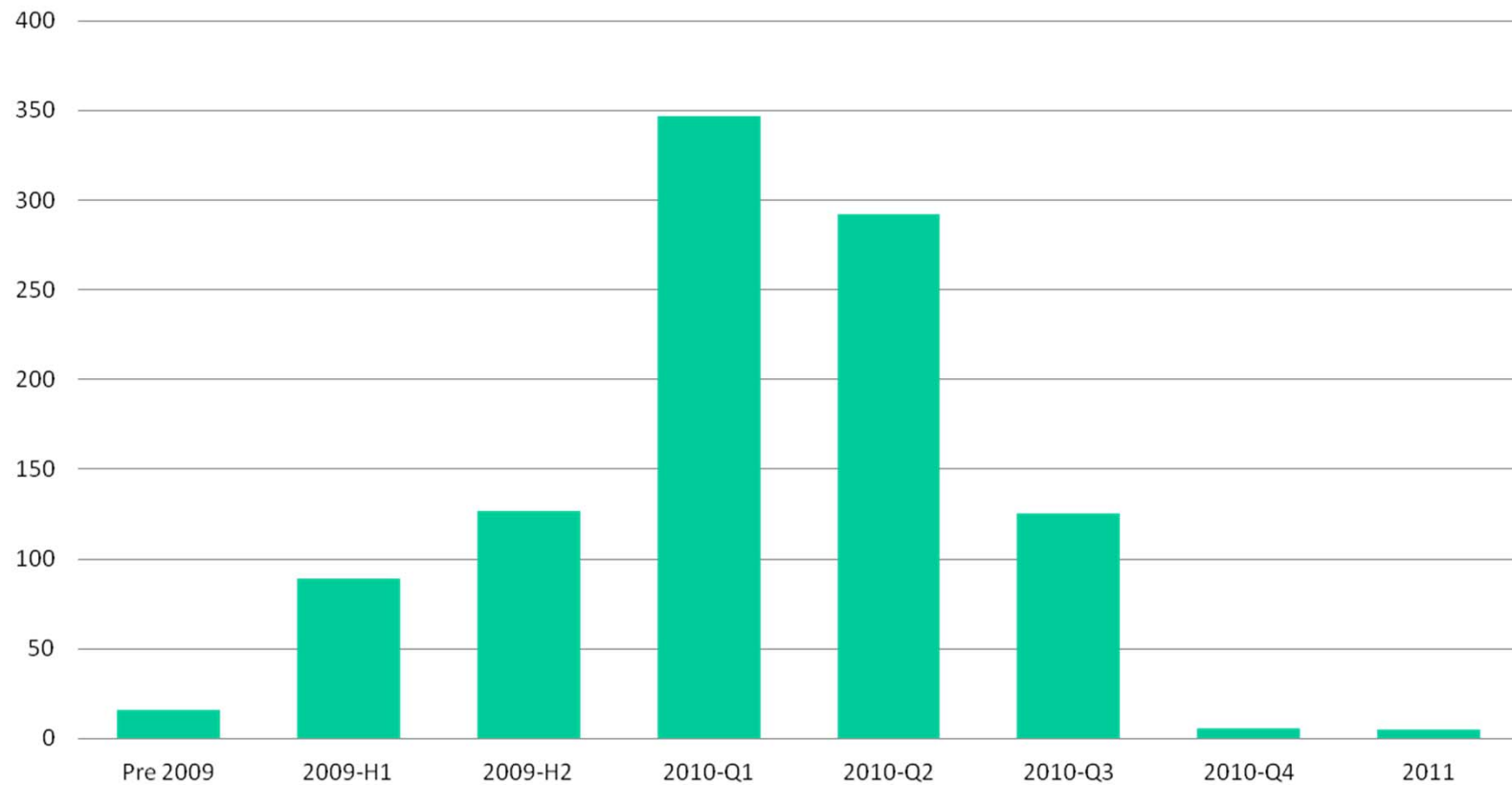


www.pensionsboard.ie



An Bord Pinsean
The Pensions Board

Effective Dates of Data Received



www.pensionsboard.ie



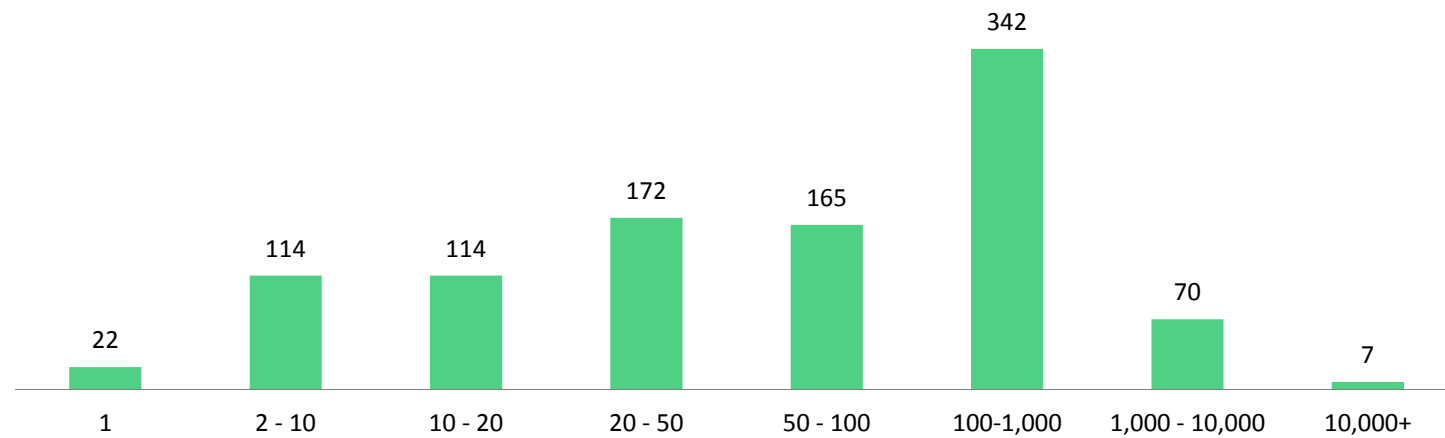
An Bord Pinsean
The Pensions Board

Schemes and Membership Numbers Reported

Type	2009 survey	2010 survey
Schemes	1,158	1,007
Actives	178,086	179,350
Deferreds	102,216	125,791
Pensioners	65,991	84,936



Schemes by Member & Beneficiary Numbers



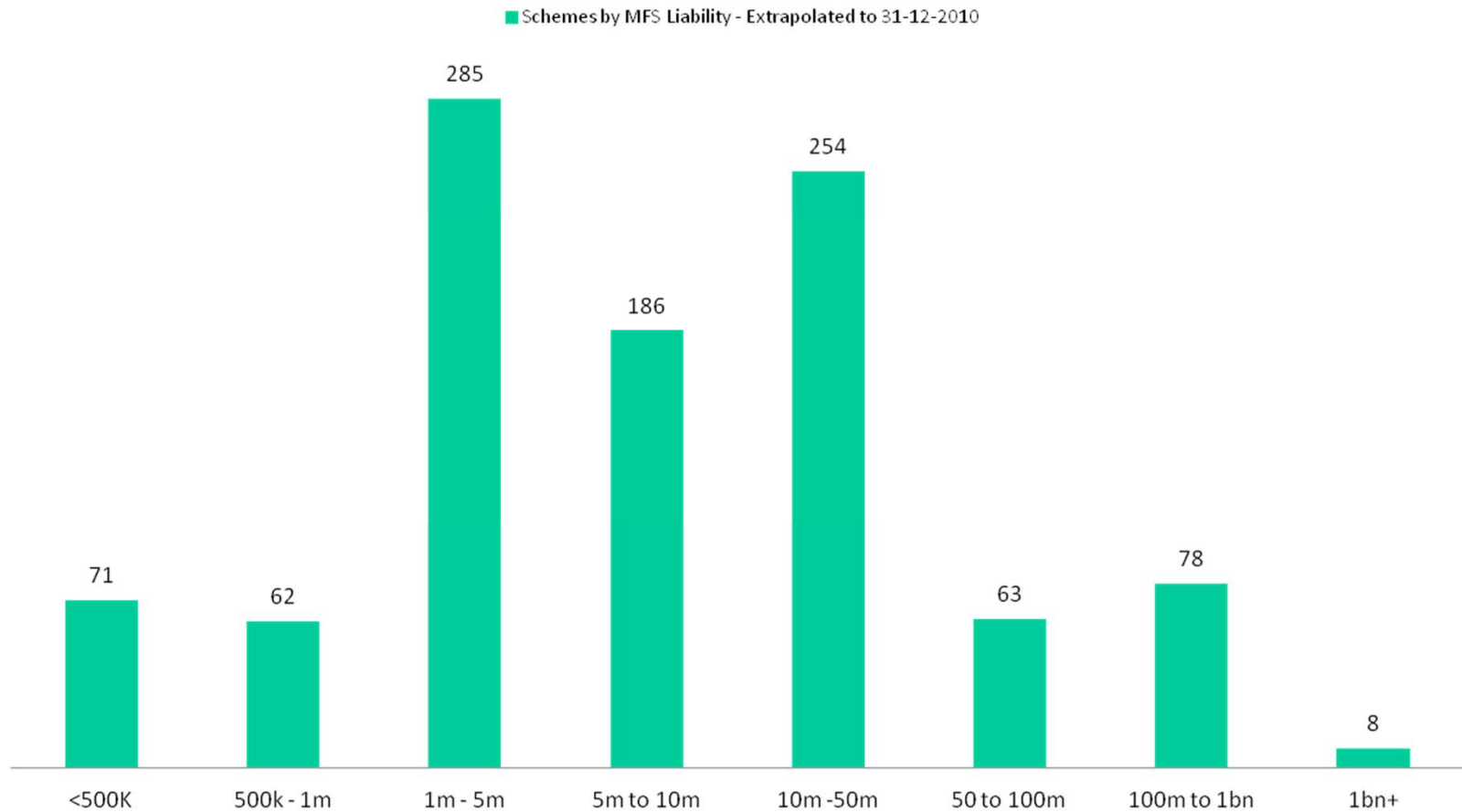
(excludes CWPS scheme)

www.pensionsboard.ie



An Bord Pinsean
The Pensions Board

Schemes by MFS Liability - Extrapolated to 31-12-2010

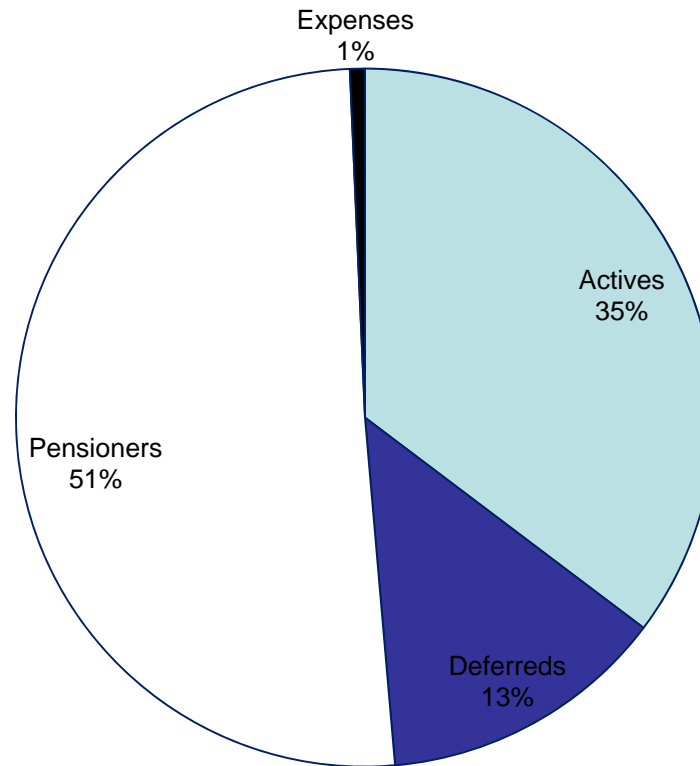


www.pensionsboard.ie

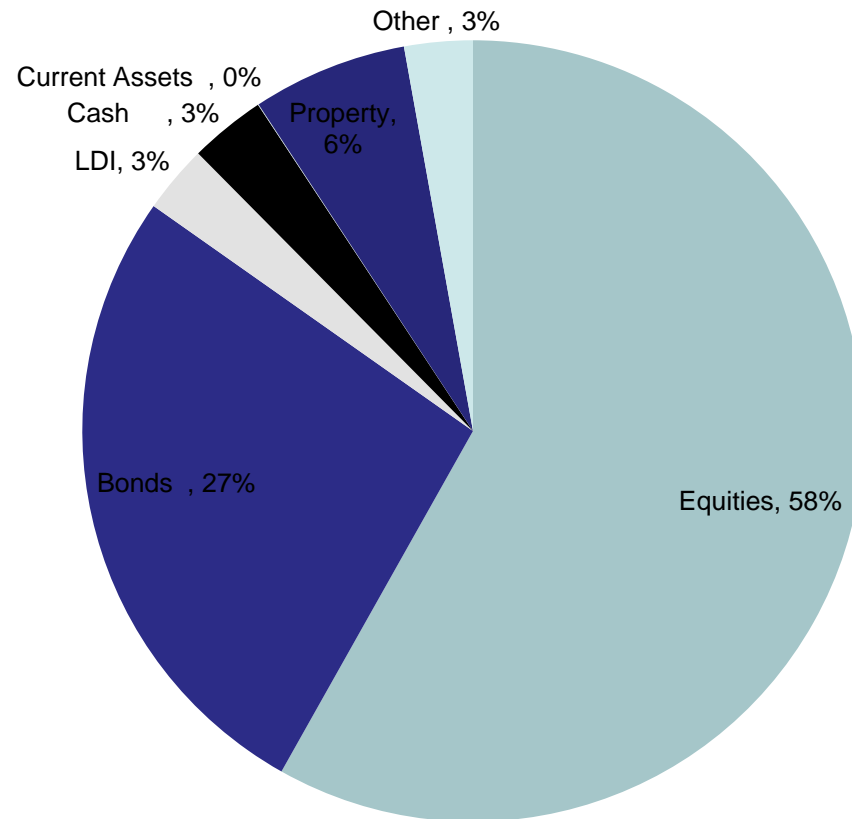


An Bord Pinsean
The Pensions Board

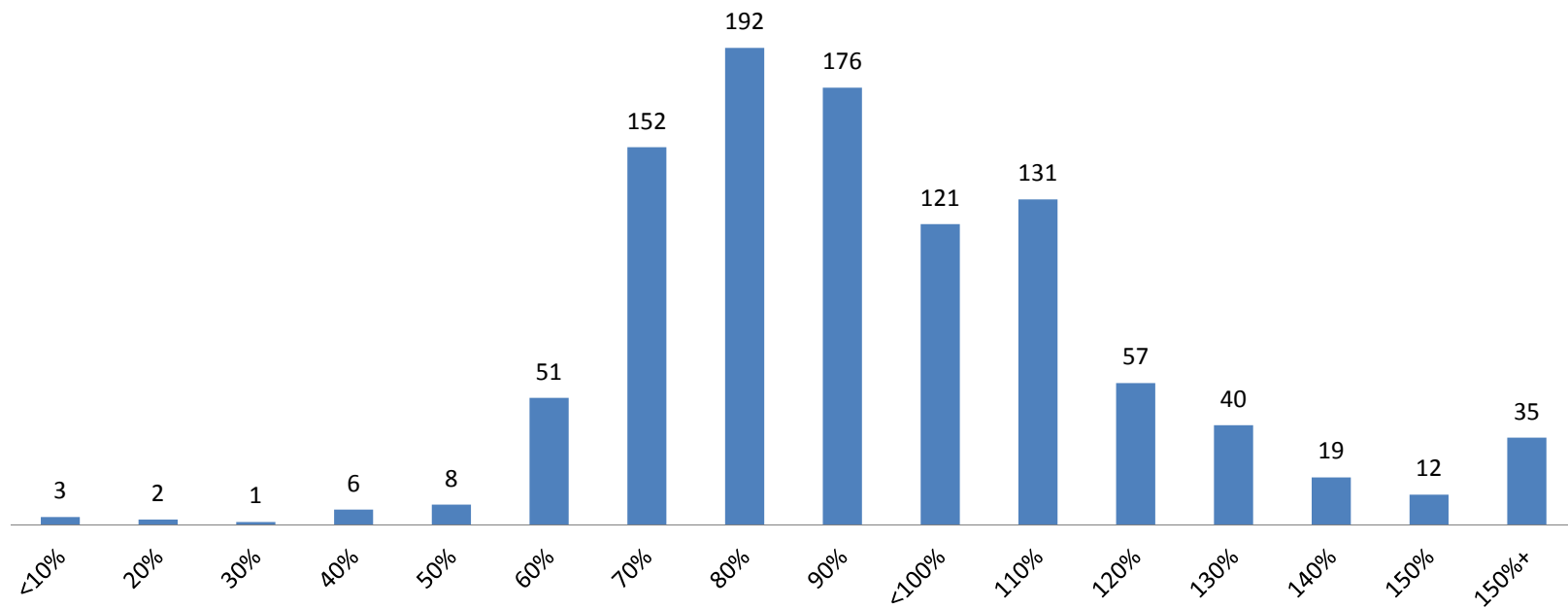
MFS Liabilities 31-12-2010 - €52bn



Total assets €43bn (extrapolated to 1-12-2010)



Schemes by Reported Funding Level - 2010 survey



Conclusions

Financial environment difficult in the period 2009 to 2011

Scheme numbers relatively steady 2008 to 2010

End 2010 – 71% of schemes failing the funding standard

30 April 2012

www.pensionsboard.ie



**An Bord Pinsean
The Pensions Board**