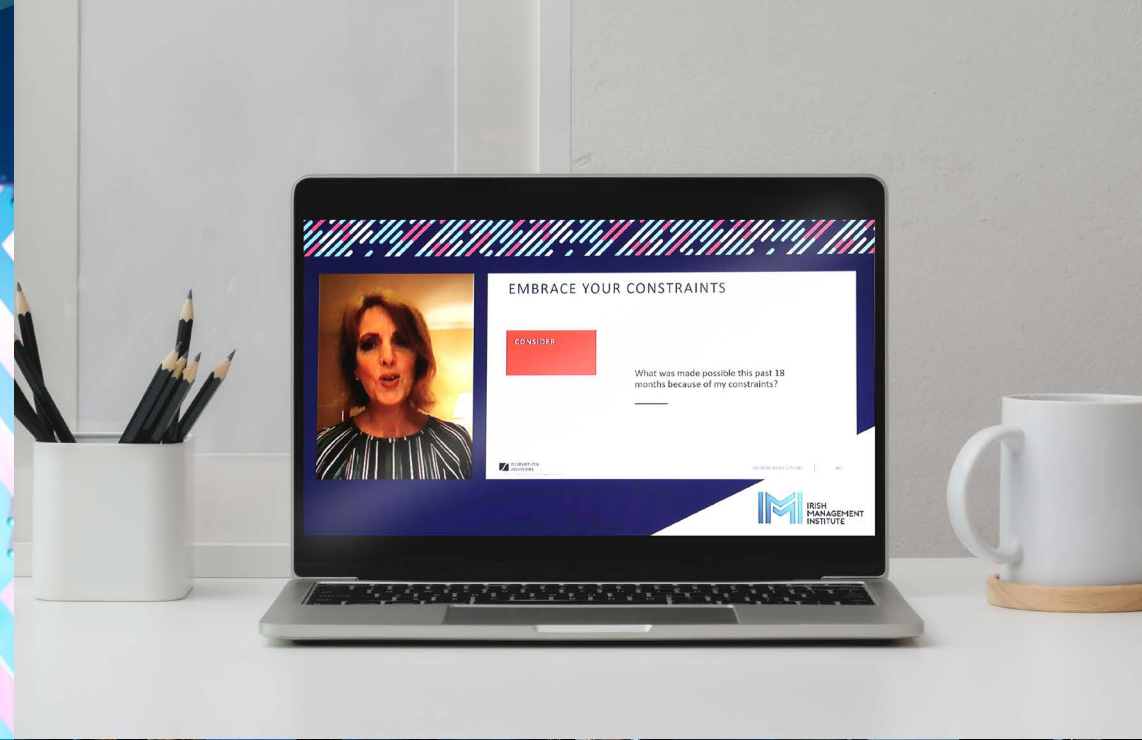




IRISH  
MANAGEMENT  
INSTITUTE



# Your Leadership Centre of Excellence

Corporate Membership 2022



# Table of Contents

04	Leadership Themes
05	Corporate Membership Overview
06	Inform Membership Events
10	National Management Conference
11	Transform Membership Events
13	Network Mentor Programme
16	2022 Events Schedule
17	Get in touch

# Your Leadership Centre of Excellence

Being an IMI Corporate Member means your people have access to world-class leadership development all year round. IMI Corporate Membership is available at two levels: Inform and Transform. Each level gives you a flexible pathway to provide people in your organisation with learning and development opportunities throughout the year.

## This year, our suite of events will comprise of three distinct formats:



Virtual

Delivered via our IMI Live platform, these events give you the flexibility to access ground-breaking thought leadership from wherever you may be.



In person

As we return to campus, you will have the opportunity to meet your peers and reap the benefits of interacting with our globally renowned thought leaders in person.



Hybrid

Link up with colleagues for our panel of international speakers who will be broadcasting live to the IMI campus, with a facilitator on hand to assist you on the day.

// IMI Corporate Membership provides our talent with access to world-class education and training combined with excellent peer experience sharing. //

Ger O'Mahoney, Partner, PWC Ireland

# 2022 Themes

Leadership doesn't stand still. This year, IMI Corporate Membership will give you the insights into what it takes to lead tomorrow.

The 2022 membership proposition will focus on 3 key themes based on IMI research into the future of work and the trends most impacting leaders and organisations, today and tomorrow. Our calendar of events has been built around these themes and insights from our members, clients and faculty. Each event explores an aspect of a key theme in depth and allows our membership community to build on their learning and development as the year progresses.



## + Accelerating Digital Transformation

In the last number of years, companies have had to transform like never before, with many organisations laser-focused on accelerating their digital plans.

From lessons in digital transformation to creating digitally-ready cultures, our leading experts will examine how you can capitalise on your digital transformation journey in a consistent, cohesive, and integrated way.



## + Creating the Human-Centric Organisation

With advanced technologies continuing to grow in importance in many organisations, uniquely human-centric capabilities and skills are coming under increased attention for the value they bring in unlocking personal and organisational performance.

Our panel of thought leaders will explore how organisations can become human-centric through their design, mindset, culture, and practices so that they can adopt a people-centered core to maximise value throughout their business.






## + Building Strategic Resilience

Organisations today need to be resilient, with the ability to react and respond to disruption with agility. We will dive into key strategies of how leaders can create strategic resilience through their people and for the organisation.

We will also consider how leaders themselves can develop their own resilience, as well as cultivating resilience in their teams so that the business can perform at its best.

# Corporate Membership On a Page

## INFORM + TRANSFORM BENEFITS

<b>Leadership Centre of Excellence</b>	 <p><b>Building the Human Centric Organisation</b></p>	<p><b>Masterclass</b> Quiet Leadership: How to Harness the Strengths of Introverts to Change How We Work, Lead, Learn, and Innovate</p> <p>Susan Cain</p>	<p><b>Mini- Masterclass</b> The Business Case for Compassionate Leadership</p> <p>Dr Amy Bradley</p>	<p><b>Webinar</b> Technostress: Break Unhealthy Technology Habits</p> <p>Aoife Donovan Lee</p>	<p><b>Webinar</b> Managing in the Age of Complexity: Lessons from a Children's Fairy Tale</p> <p>Larry Stapleton</p>	<b>National Management Conference 2022</b>
	 <p><b>Accelerating Digital Transformation</b></p>	<p><b>Masterclass</b> Leading Digital Transformation in the Pandemic Era</p> <p>George Westerman</p>	<p><b>Mini- Masterclass</b> How to Succeed in Delivering Digital Transformation</p> <p>Professor Alan Brown</p>	<p><b>Webinar</b> Permanent Reinvention</p> <p>Aidan McCullen</p>	<p><b>Webinar</b> Digital Leadership for Digital Transformation</p> <p>Fiona O'Carroll</p>	
	 <p><b>Building Strategic Resilience</b></p>	<p><b>Masterclass</b> Rethinking Trust and Humility</p> <p>Rachel Botsman</p>	<p><b>Mini- Masterclass</b> Reimagining Resilience</p> <p>Hetty Einzig</p>	<p><b>Webinar</b> Human Capital Trends</p> <p>Deloitte</p>	<p><b>Webinar</b> Pathways to the Circular Economy and Bioeconomy</p> <p>Mary Cronin</p>	

## TRANSFORM ONLY

<p><b>People Strategy Network</b> Co-Creating the Future of Work and HR Through the Holistic Employee Experience</p> <p>Ben Whitter</p>	<p><b>Future of Work Series</b> Next Generation Leadership</p> <p>Adam Kingl</p>
<p><b>People Strategy Network</b> Strategic Digital HR</p> <p>Tony Moroney</p>	<p><b>Future of Work Series</b> Making Adaptability a Habit</p> <p>Adam Kingl</p>

- + Additional Benefits
- + Programme discounts
- + Learning and Development Resources
- + IMI Campus Facilities
- + Event Archive
- + Network Mentors

# INFORM Membership Events

Experience world-leading thought leadership with INFORM Membership

The go-to place for all things related to strategy and talent, INFORM Membership will allow your people to ask the right questions and look for the right solutions.

## Masterclass Series

Susan Cain

VIRTUAL



Ranked as one of the top 10 influencers in the world by LinkedIn, Susan is a renowned speaker and New York Times best-selling author of two books.



### Quiet Leadership: How to Harness the Strengths of Introverts to Change How We Work, Lead, Learn, and Innovate

Gain a sophisticated understanding of what introversion and extroversion are, and how they shape the way we interact, make decisions, and lead.

09 February 2022

George Westerman

HYBRID



Dr. George Westerman is a Senior Lecturer at the MIT Sloan School of Management and specialises in the dynamic intersection of executive leadership and technology strategy.



### Leading Digital Transformation in the Pandemic Era

Use frameworks, case studies and self-assessments based on 10 years of research on digital transformation to learn how to turn your company into a 'digital master'.

12 May 2022

Rachel Botsman

HYBRID



Rachel has been recognised as one of the world's 30 most influential management thinkers and is the author of two critically acclaimed books, 'What's Mine is Yours' and 'Who Can You Trust?'



### Rethinking Trust and Humility

Challenge your mindset to think differently about trust and humility in the modern world by exploring a new language and powerful principles to earn trust as individuals and as organisations.

24 November 2022

The Masterclass Series is for: C-level and Senior Executives



Creating the Human-Centric Organisation



Accelerating Digital Transformation



Building Strategic Resilience

Challenge your thinking, change your organisation.

# INFORM Membership Events

Mini-Masterclass Series

Dr Amy Bradley

VIRTUAL



Amy researches, writes, consults and speaks on the topics of compassion, engagement and burnout at work. She was listed on the prestigious Thinkers50 Radar of global management thinkers in 2020.



### The Business Case for Compassionate Leadership

This session will examine the power of compassionate leadership and the compelling evidence that suggests organisations that prioritise compassion report higher levels of profitability, innovation, customer loyalty and employee retention.

08 March 2022



Creating the Human-Centric Organisation

Professor Alan Brown

VIRTUAL



Alan is a university professor, researcher, coach and trusted adviser to start-ups and established organisations across the public and private sector. His work is focused on leading agile approaches to business transformation.



### How to Succeed in Delivering Digital Transformation

This session will focus on the impact of digital technologies on business and society, and assess how best to respond to transform the way we work, live, and interact.

16 June 2022



Accelerating Digital Transformation

Hetty Einzig

VIRTUAL



Hetty brings 25 years of psychology and executive coaching experience to global leadership development. A best-selling author, she has worked with a wide range of organisations across the private, corporate and public sectors.



### Reimagining Resilience

Discover how to interpret your body's communication to build personal resilience and learn why having a framework for energy management is a fundamental part of being a resilient leader.

13 October 2022



Building Strategic Resilience

The Mini-Masterclass Series is for: Mid to Senior Executives/Managers

Please note that details are subject to change.

# INFORM Membership Events

## IMI Leadership Webinar Series (Part 1)

Aoife Donovan Lee

VIRTUAL



Aoife is an Organisational Psychologist and Executive Coach with expertise in the areas of leadership, high performance, technostress, and building emotional capital.



### Technostress: Break Unhealthy Technology Habits

In this session, you will learn a simple three-step process for breaking unhealthy technology habits that are holding you back from achieving optimal business outcomes.

19 January 2022



Creating the Human-Centric Organisation

Aidan McCullen

VIRTUAL



Aidan is a change consultant and executive coach, and works with organisational teams to improve engagement and innovation. He is the author of the best-selling book 'Undisruptable: A Mindset of Permanent Reinvention for Individuals, Organisations and Life'.



### Permanent Reinvention

Develop the capabilities to deal with an era of rapid change, a critical tool to remain relevant for our organisations and in our careers, and discover why personal leadership is essential to this mindset.

02 March 2022



Accelerating Digital Transformation

Deloitte

VIRTUAL



Deloitte is a leading global provider of audit and assurance, consulting, financial advisory, risk advisory, tax, and related services.



### Human Capital Trends: Building Workforce Resiliency and Agility

Deloitte will explore the key trends that have been at the forefront for organisational leaders related to work, the workforce, and the workplace.

08 June 2022



Building Strategic Resilience

The Leadership Webinar Series is for: All Managers

Please note that details are subject to change.



# INFORM Membership Events

## IMI Leadership Webinar Series (Part 2)

Mary Cronin

VIRTUAL



Mary brings 25 years of experience as a Chartered Engineer, circular innovation catalyst and technologist. She has a deep understanding of business ecosystems.

Larry Stapleton

VIRTUAL



Larry has engaged in the digital transformation journeys of large and small firms. He is passionate about creating resilient organisations and liberating performance.

Fiona O'Carroll

VIRTUAL



Fiona is a globally recognised expert on digital mindset and digital transformation. She has significant experience in digital business strategy formulation, digitally led business transformation and digital mindset development.

### Pathways to the Circular Economy and Bioeconomy

In this session, you will be introduced to the circular economy and bioeconomy, as well as the challenges and opportunities associated with each and the implications for businesses.

21 September 2022

### Managing in the Age of Complexity: Lessons from a Children's Fairy Tale

In this session, you will learn about the four dimensions of complexity and why they are instrumental in shaping management priorities for digital-age organisations.

02 November 2022

### Digital Leadership for Digital Transformation

Identify the mindsets needed in the digital era, the common leadership traps and understand how leading in the digital era is distinct from leading in the analogue era.

14 December 2022

The Leadership Webinar Series is for: All Managers



Building Strategic Resilience



Creating the Human-Centric Organisation



Accelerating Digital Transformation

Please note that details are subject to change.

# National Management Conference 2022

## The premier event for senior business leaders

Each year, IMI brings together world-class speakers to deliver a morning of thought-provoking, challenging, and inspiring sessions for senior business leaders. Set in a private environment, you can network and discuss business challenges with your peers in total confidence. Attendance is exclusively for IMI Corporate Members and C-suite professionals.

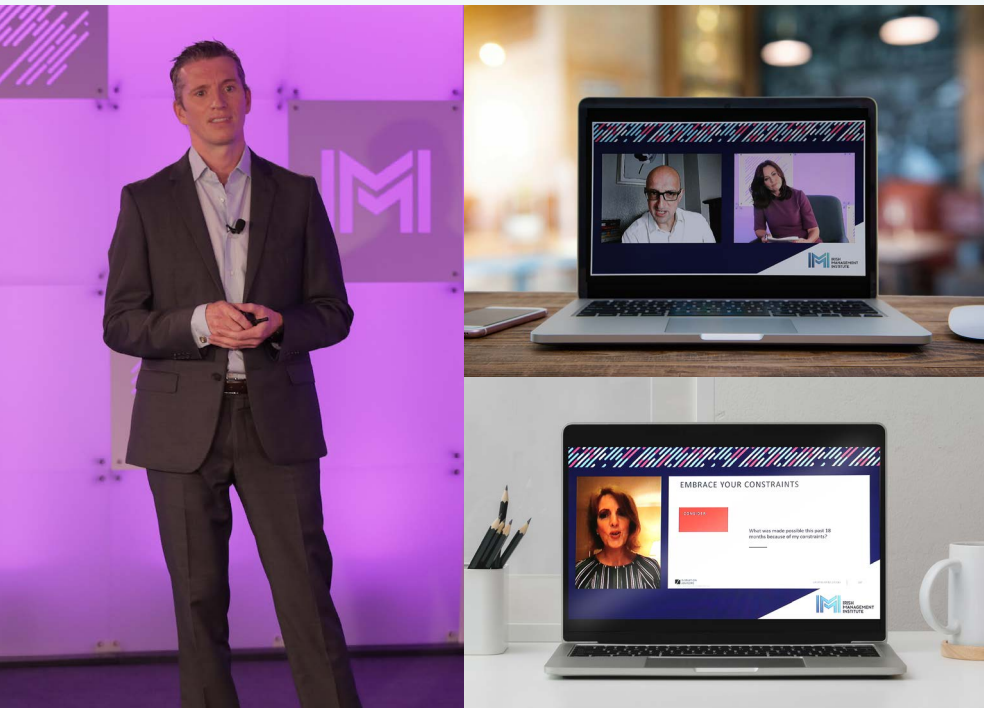
### The National Management Conference is for:

C-level and Senior Executives

22<sup>nd</sup> September 2022



Hybrid



// IMI has demonstrated its ability to adapt and embrace a continuous learning cycle, that makes its events and programs relevant to developing, nurturing and growing leadership talent. More importantly, the organisation has also been able to grow its brand as a premium institute of learning and development //

Lionel Alexander,  
Chairman at Intact Software

# TRANSFORM Membership Events

With TRANSFORM Membership, you will be forming a trusted learning and development partnership that can deliver solutions throughout the year that match your needs. The TRANSFORM suite builds on the strategic thinking of INFORM Membership and gives you, and the leaders within your organisation, insights into future business practices. Transform Members have access to all Inform events, plus:

## People Strategy Network

**Ben Whitter**

IN PERSON



Ben is an international keynote speaker and, in 2021, was named as one of the world's top management thinkers by Thinkers50 and one of the top 30 organisational culture speakers in the world by Global Gurus.



### Co-Creating the Future of Work and HR Through the Holistic Employee Experience

Organisations and their HR functions have reached a critical juncture. This session will help participants navigate the new world of work, highlighting the key elements in creating a human-centered business strategy that delivers exceptional results.

**15 February 2022**

**Tony Moroney**

IN PERSON



Tony is Managing Partner with Beta Digital, a specialist digital transformation advisory firm and is a co-founder of the Digital Transformation Lab at University College Cork (UCC), an expert community spanning industry, consulting and academia.



### Strategic Digital HR

To succeed, senior HR leaders need to acquire the skills necessary to process, produce and leverage digital information. In this session, Tony and the team at IMI will co-create a workshop that delves deeper into the approaches and skills needed to succeed in the future.

**20 October 2022**

The People Strategy Network Series is for: Senior Human Resources, Learning and Development, and Organisational Development Executives

The right room, the right people, the right strategies.

# TRANSFORM Membership Events

Future of Work Series

Adam Kingl

IN PERSON



Adam Kingl is a keynote speaker and educator affiliated with a number of institutions, including the IMI, Moller Institute at the University of Cambridge, University College London, Imperial College and Hult Ashridge. He is the author of Next Generation Leadership and has contributed to publications including the Financial Times, The Guardian, Forbes, Fast Company, The Sunday Times and many more.



## Next Generation Leadership

How do the expectations of Generation Y have potential long-lasting consequences for the future of business? In this session, you will explore how to recruit and retain your high-potential talent and discover practical tips on how to prepare for the future of leadership.

06 April 2022



## Making Adaptability a Habit

A highly volatile environment means that today's profits are a poorer predictor of tomorrow's profits. In this session, you will be taken on a journey to re-evaluate how you think about and discuss change with your teams as you learn a framework to make adaptability an autonomic, reflexive characteristic in ourselves and our organisations to deliver a competitive advantage.

10 November 2022

The Future of Work Series is for: All Senior Managers

Lead Change, Power Growth.

Please note that details are subject to change.

# TRANSFORM Membership Virtual

## IMI/30% Club Network Mentor Programme

The IMI/30% Club Network Mentor Programme offers organisations across Ireland the opportunity to participate in a unique cross-company, all-Ireland initiative designed to deliver an exceptional mentoring experience to your high potential talent mentees and your senior executive mentors. Mentoring is a critical leadership development opportunity and a key element of any human capital strategy designed to attract, retain, develop and maximise an organisation's key talent capability.

You identify two senior executives interested in mentoring alongside two high-potential mentees to join one of the country's most successful mentor programmes. By allowing your people to step outside their own box and find new angles to their thinking, you will experience the positive ripple effects throughout your organisation.

### INFORM Members:

€3,000 per cohort

### TRANSFORM Members:

+ 1 complimentary cohort per 12-month membership period

One cohort comprises 2 mentors and 2 mentees



## Programme Start Date

MAY

26

SPRING LAUNCH

DECEMBER

01

AUTUMN LAUNCH

// I have been incredibly fortunate to participate as a mentor several times and have enjoyed every moment of it. The cross-industry participation, as well as the talent and experience of the mentees, has been phenomenal. The whole programme is brilliantly organised, and I would strongly encourage everyone to participate //

Fiona Gallagher,  
CEO of Wells Fargo Bank  
International UC (WFB)

# IMI Learning and Development Supports

All IMI Members also have access to the following learning and development opportunities:



## IMI Insights

Sitting at the heart of the leadership development community, IMI is ideally placed to provide you with concise, easy-to-understand and deployable insights.

Throughout the year all IMI Members get access to a number of unique IMI produced cutting edge content.



### Talking Leadership Podcast

Join us as we talk to some of the world's leading experts on what it takes to lead today.



## IMI Knowledge Centre

The IMI Knowledge Centre provides access to the largest collection of business and management development resources available in Ireland to organisations.

The Knowledge Centre gives your team members the opportunity to find immediate solutions and the latest thinking around the challenges they are facing today.

# IMI Learning and Development Supports

All IMI Members also have access to the following learning and development opportunities:



## Programme Discounts

As an IMI Corporate Member, you and your organisation will receive attractive discounted rates on IMI professional diplomas and short programmes.



## IMI Campus Facilities

Take the time to think strategically and bring your team to IMI's Campus for meetings and away days.

IMI Members can book a limited number of complimentary executive-sized meeting rooms throughout their 12-month membership period, as well as avail of member discounts on additional meeting room hires.

Use of campus facilities are dependent on government advice and adherence to social distancing guidelines.



# Event Schedule 2022

<b>JANUARY</b> <b>19</b> <b>WEBINAR 1</b> Technostress: Break Unhealthy Technology Habits <b>Aoife Donovan Lee</b>	<b>FEBRUARY</b> <b>09</b> <b>MASTERCLASS 1</b> Quiet Leadership: How to Harness the Strengths of Introverts to Change How We Work, Lead, Learn, and Innovate <b>Susan Cain</b>	<b>FEBRUARY</b> <b>15</b> <b>PEOPLE STRATEGY NETWORK</b> Co-Creating the Future of Work and HR Through the Holistic Employee Experience <b>Ben Whitter</b>	<b>MARCH</b> <b>02</b> <b>WEBINAR 2</b> Permanent Reinvention <b>Aidan McCullen</b>	<b>MARCH</b> <b>08</b> <b>MINI-MASTERCLASS 1</b> The Business Case for Compassionate Leadership <b>Dr Amy Bradley</b>	<b>APRIL</b> <b>06</b> <b>FUTURE OF WORK SERIES 1</b> Next Generation Leadership <b>Adam Kingl</b>	<b>MAY</b> <b>12</b> <b>MASTERCLASS 2</b> Leading Digital Transformation in the Pandemic Era <b>George Westerman</b>
<b>JUNE</b> <b>08</b> <b>WEBINAR 3</b> Human Capital Report 2022 <b>Deloitte</b>	<b>JUNE</b> <b>16</b> <b>MINI-MASTERCLASS 2</b> How to Succeed in Delivering Digital Transformation <b>Professor Alan Brown</b>	<b>SEPTEMBER</b> <b>21</b> <b>WEBINAR 4</b> Pathways to the Circular Economy and Bioeconomy <b>Mary Cronin</b>	<b>22 SEPTEMBER</b> 	<b>OCTOBER</b> <b>13</b> <b>MINI-MASTERCLASS 3</b> Reimagining Resilience <b>Hetty Einzig</b>	<b>OCTOBER</b> <b>20</b> <b>PEOPLE STRATEGY NETWORK</b> Strategic Digital HR <b>Tony Moroney</b>	<b>NOVEMBER</b> <b>02</b> <b>WEBINAR 5</b> Managing in the Age of Complexity: Lessons from a Children's Fairy Tale <b>Larry Stapleton</b>
<b>NOVEMBER</b> <b>10</b> <b>FUTURE OF WORK SERIES 2</b> Making Adaptability a Habit <b>Adam Kingl</b>	<b>NOVEMBER</b> <b>24</b> <b>MASTERCLASS 3</b> Rethinking Trust and Humility <b>Rachel Botsman</b>	<b>DECEMBER</b> <b>14</b> <b>WEBINAR 6</b> Digital Leadership for Digital Transformation <b>Fiona O'Carroll</b>	<b>LEGEND:</b> <div style="display: flex; flex-direction: column; gap: 5px;"> <div style="background-color: #008000; color: white; padding: 2px 5px;">Inform and Transform Events</div> <div style="background-color: #000080; color: white; padding: 2px 5px;">Transform Exclusive Events</div> <div style="display: flex; gap: 10px;"> <div style="background-color: #800080; color: white; padding: 2px 5px; display: flex; align-items: center; gap: 5px;"> Virtual</div> <div style="background-color: #008080; color: white; padding: 2px 5px; display: flex; align-items: center; gap: 5px;"> In person</div> <div style="background-color: #FF4500; color: white; padding: 2px 5px; display: flex; align-items: center; gap: 5px;"> Hybrid</div> </div> </div>			



# Get In Touch

Join a community of leaders and managers committed to delivering their organisations' business strategy — through a people strategy that is aligned and future-proofed. Contact the team at [membership@imi.ie](mailto:membership@imi.ie) today and begin accessing your organisation's very own leadership centre of excellence.

---

## More ways to get in touch

📞 +353 (0)1 207 8400

🌐 [www.imi.ie/membership](http://www.imi.ie/membership)

📍 IMI — Irish Management Institute, Sandyford Road, Dublin 16, Ireland



Irish Management Institute  
Sandyford Road,  
Dublin 16, Ireland  
[imi.ie](http://imi.ie)



UCC Centre for Executive Education  
1 Lapp's Quay, Centre,  
Cork, Ireland