



Geometry 1 – Question Handout

Question 1.

The equations of six lines are given:

Line	Equation
<i>h</i>	$x = 3 - y$
<i>i</i>	$2x - 4y = 3$
<i>k</i>	$y = -\frac{1}{4}(2x - 7)$
<i>l</i>	$4x - 2y - 5 = 0$
<i>m</i>	$x + \sqrt{3}y - 10 = 0$
<i>n</i>	$\sqrt{3}x + y - 10 = 0$

- (a) Complete the table below by matching each description given to one or more of the lines.

Description	Line(s)
A line with a slope of 2.	
A line which intersects the y -axis at $(0, -2\frac{1}{2})$.	
A line which makes equal intercepts on the axes.	
A line which makes an angle of 150° with the positive sense of the x -axis.	
Two lines which are perpendicular to each other.	

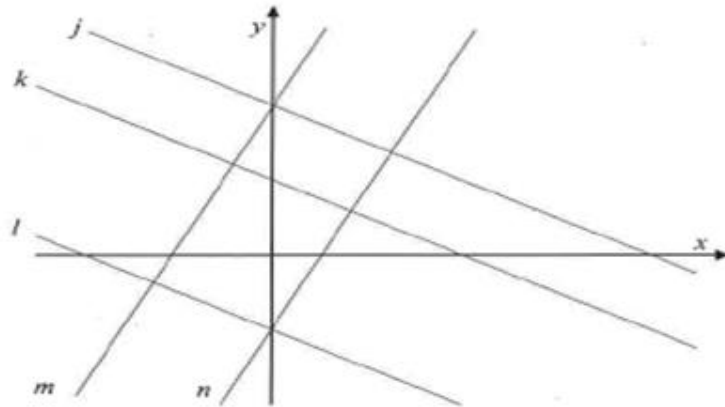
- (b) Find the acute angle between the lines m and n .



Geometry 1 – Question Handout

Question 2.

In the co-ordinate diagram shown, the lines j , k , and l are parallel, and so are the lines m and n . The equations of four of the five lines are given in the table below.



Equation	Line
$x + 2y = -4$	
$2x - y = -4$	
$x + 2y = 8$	
$2x - y = 2$	

- (a) Complete the table, by matching four of the lines to their equations.
- (b) Hence, insert scales on the x -axis and y -axis.
- (c) Hence, find the equation of the remaining line, given that its x -intercept and y -intercept are both integers.

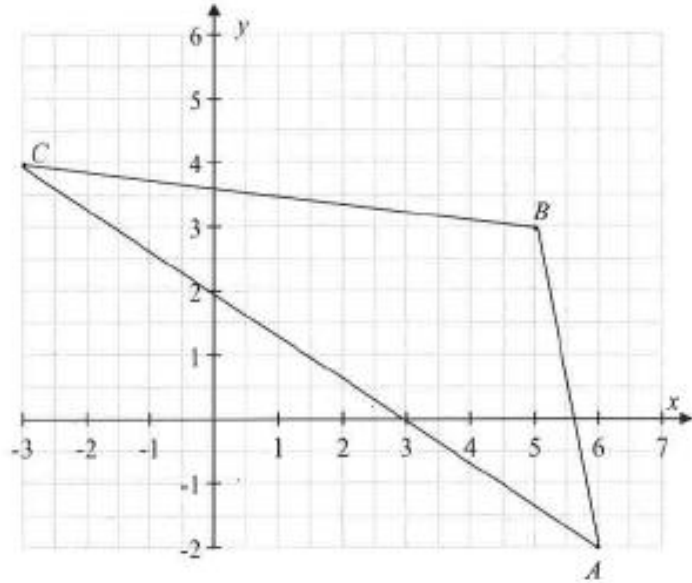


Geometry 1 – Question Handout

Question 3.

The points $A(6, -2)$, $B(5, 3)$ and $C(-3, 4)$ are shown on the diagram.

- (a) Find the equation of the line through B which is perpendicular to AC .



- (b) Use your answer to part (a) above to find the co-ordinates of the orthocentre of the triangle ABC .

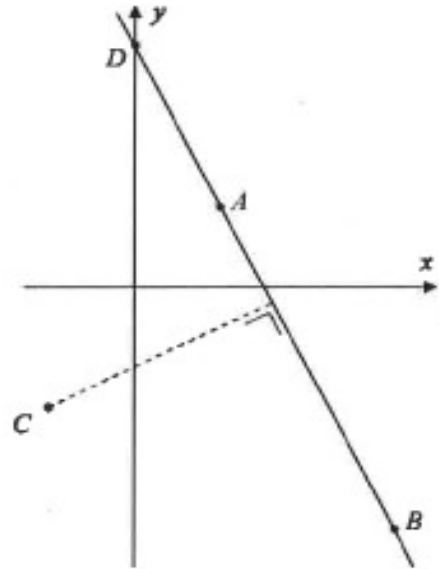


Geometry 1 – Question Handout

Question 4.

The co-ordinates of three points A , B , and C are: $A(2, 2)$, $B(6, -6)$, $C(-2, -3)$.
(See diagram on facing page.)

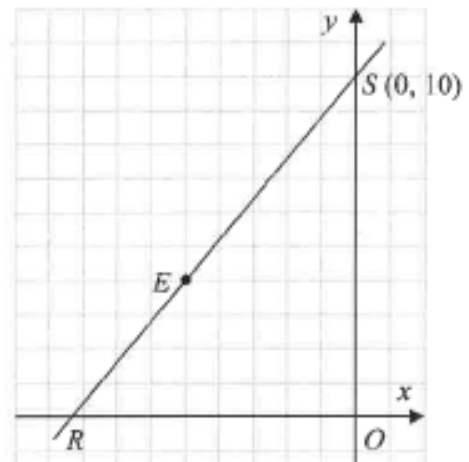
- (a) Find the equation of AB .
- (b) The line AB intersects the y -axis at D .
Find the coordinates of D .
- (c) Find the perpendicular distance from C to AB .
- (d) Hence, find the area of the triangle ADC .



Question 5.

The line RS cuts the x -axis at the point R and the y -axis at the point $S(0, 10)$, as shown. The area of the triangle ROS , where O is the origin, is $\frac{125}{3}$.

- (a) Find the co-ordinates of R .
- (b) Show that the point $E(-5, 4)$ is on the line RS .



- (c) A second line $y = mx + c$, where m and c are positive constants, passes through the point E and again makes a triangle of area $\frac{125}{3}$ with the axes. Find the value of m and the value of c .



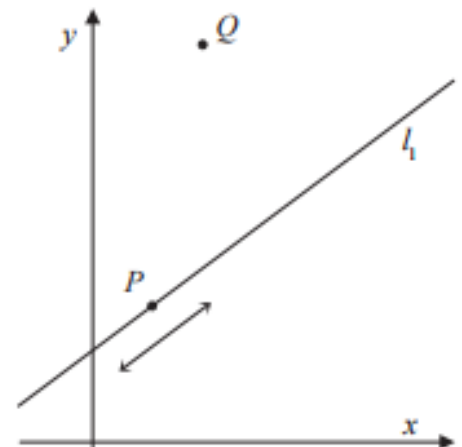
Geometry 1 – Question Handout

Question 6.

- (a) The co-ordinates of two points are $A(4, -1)$ and $B(7, t)$.
The line $l_1 : 3x - 4y - 12 = 0$ is perpendicular to AB . Find the value of t .
- (b) Find, in terms of k , the distance between the point $P(10, k)$ and l_1 .
- (c) $P(10, k)$ is on a bisector of the angles between the lines l_1 and $l_2 : 5x + 12y - 20 = 0$.
- (i) Find the possible values of k .
- (ii) If $k > 0$, find the distance from P to l_1 .

Question 7.

- (a) Show that, for all $k \in \mathbb{R}$, the point $P(4k - 2, 3k + 1)$ lies on the line $l_1 : 3x - 4y + 10 = 0$.
- (b) The line l_2 passes through P and is perpendicular to l_1 . Find the equation of l_2 , in terms of k .



- (c) Find the value of k for which l_2 passes through the point $Q(3, 11)$.
- (d) Hence, or otherwise, find the co-ordinates of the foot of the perpendicular from Q to l_1 .



Geometry 1 – Question Handout

Question 8.

- (a) Find the measures of the angle between the line $j: 3x - 2y - 6 = 0$ and the line $k: 3x + y - 24 = 0$
- (b) A triangle PQR is enclosed between lines j and k and the x -axis. [PR] is on the x -axis. Find the acute angle $\angle PQR$.
- (c) the point R is moved to a new position on the x -axis and labelled R_1 . If $\angle PQR = 45^\circ$, find the co-ordinates of R_1

Link to SAI website for Maths Tutorial Material

<https://web.actuaries.ie/students/maths-tutorials-higher-level-leaving-certificate-20202021>

Link to SAI insta

<https://www.instagram.com/saimathstutorials?r=nametag>